

Opus_R User Manual

Table of Contents

System Requirements	2
Usage Considerations	3
General Use	3
Backing Up Data.....	3
Reminders	3
Disconnecting from a Computer	4
Removing the Reader in Windows® 2000 , XP and Vista™	4
Setting Up the Software.....	5
Reader Secure Login	9
Function - Introduction.....	12
System Settings.....	14
Fingerprint Management	14
Preferences	16
Stop Authentication Session.....	17
Backup User Profile.....	17
Restore User Profile	18
Password Bank	22
Delete Website	24
Quick Login Websites.....	24
Protect Files	25
File / Folder Encryption.....	25
File / Folder Decryption	26
PC-Lock	27
Lock Now.....	27
Settings.....	27
Virtual Disk	29
Mount Virtual Disk	29
Unmount Virtual Disk.....	29
Delete Virtual Disk.....	29
Setting Virtual Disk	30

System Requirements

Desktop or notebook computer with a working USB port.

The Reader can only be used in a computer running the following Operating Systems (OS):

- Windows® 2000, Microsoft® Internet Explorer (IE)
 - Windows® XP, Microsoft® Internet Explorer (IE)
 - Windows® Vista™, Microsoft® Internet Explorer (IE)
-

Usage Considerations

These usage and safety guidelines are **IMPORTANT!** Please follow them carefully.



WARNING! The sensor strip on the Reader is sensitive to physical damage, avoid squeezing, or scratching your Reader with any hard or sharp object. When not in use, or during transportation always ensure that the devices' protective cover is on.

General Use

- The Reader comes with bundled software and can only be used with a computer that is running Windows® 2000, XP or Vista™.
- Ensure that you make and save a **Backup User Authentication File** of your Fingerprint user information to your computer.

Backing Up Data

- **We does NOT take any responsibility for data loss, or damage during operation.** If you decide to store data on your PC we strongly advise that you regularly backup the data to a computer, or other storage medium.

Reminders

Always follow the procedures in the "[Disconnecting from a Computer](#)" section to remove your Reader from a computer.

Disconnecting from a Computer

When you are finished using the Reader always click on the **Quit** option in the **Fingerprint Application Suite** to end the session properly.

1. Right click on the “**Fingerprint Application Suite**”  icon on the Windows System Tray and select the “**Quit**” option.

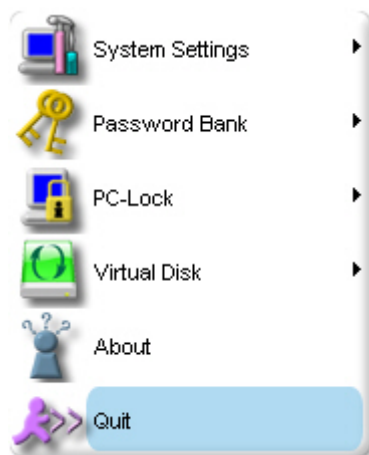


Figure 1. Quit



NEVER disconnect the Reader from a Computer when its LED is flashing.

Removing the Reader in Windows® 2000 , XP and Vista™


1. Select the **Hardware**  icon on the system tray.
2. The **Safely Remove Hardware** pop-up window will appear. Select it to continue.




Figure 2. Safely Remove Hardware



WARNING! To prevent data loss, always use this procedure to remove the Reader from Windows® 2000, XP and Vista™.

Setting Up the Software

 **CAUTION! Before using the Reader for the first time you must setup the units' application software in the System Setup Wizard.**

1. Put the disk in the CD-ROM drive and it will auto run. Choose the Setup button to install.



Figure3. Opus_R Setup

2. After pressing Setup button, you will find the frame as below. Please follow the indication to install.



Figure 4. Function setup frame

The Reader comes bundled with very useful software(Opus_R) that can be used to manage your data and increase your productivity. Before using the reader for the first time, please ensure that you setup the Opus_R software; this will ensure that you get the maximum benefit from your Reader.

1. Plug the Reader directly into an available USB port on your desktop, or notebook computer.
2. The **System Setup Wizard** window will appear and guide you through the setup process. Please follow the on-screen instructions to complete setting up the Opus_R software. Click on the “**Next**” button to continue. The Wizard will prompt you with two options. Option one is to create a New User account. Option two gives access to previously saved User Authentication. If this is your first time using the Opus_R select option one by clicking on the “**I want to create a new User Authentication File**” radio button. Click on the “**Next**” button to continue.

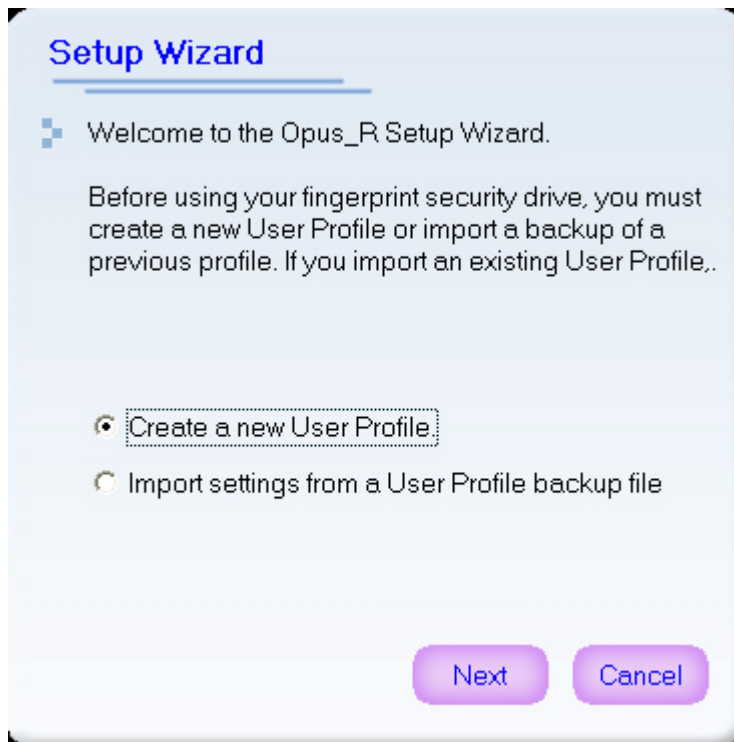


Figure 5. System Setup Wizard

3. Input a “**User Name**,” this can be a combination of letters and numbers only (no spaces). Input a “**Password**” and “**Confirm Password**.” Click on the “**Next**” button to continue.



Figure 6. Enter the user name and password

- ❖ Entering a password gives you the option of using a secret password, or your fingerprint to access secure data.
4. Setting up the Opus_R software involves put the selected finger, or thumb along the Reader’s sensor

strip three times to register your fingerprint information. Please be patient when you are performing this procedure, as it may take a few attempts to register your fingerprint profile.

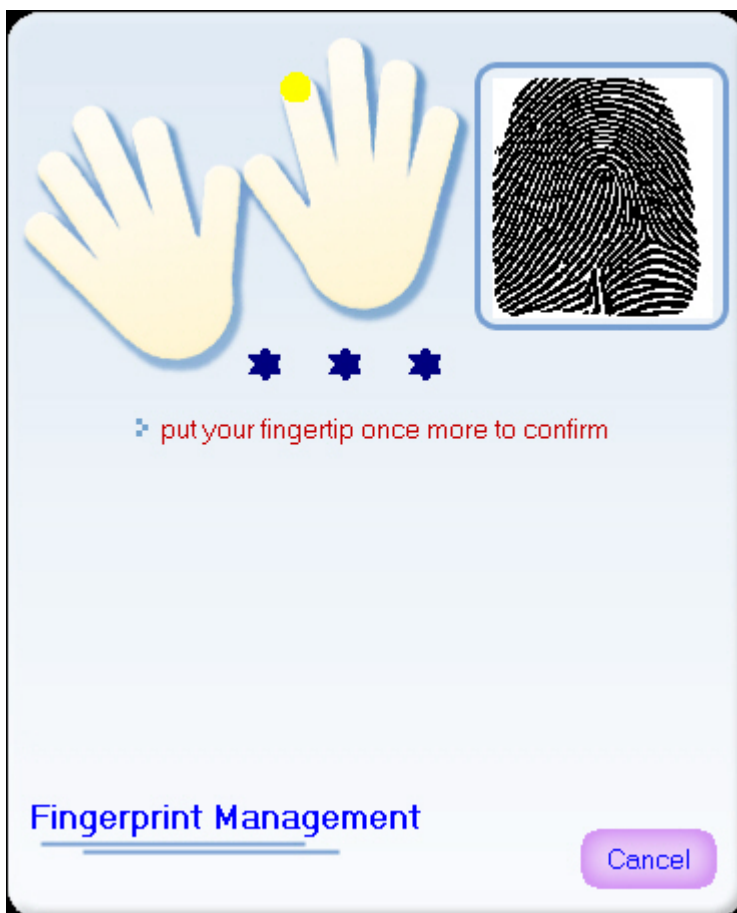


Figure 7. Fingerprint registration requires 4 successful scans

5. Backup your User Authentication, Password and Fingerprint information in the form of a *.bak file to the pre-specified location, or select a location by clicking on the “**Save**” button.



Figure 8. Select a location for your Backup *.bak file

6. Click on the “**Exit**” button to complete the setup process and exit the **System Setup Wizard**.

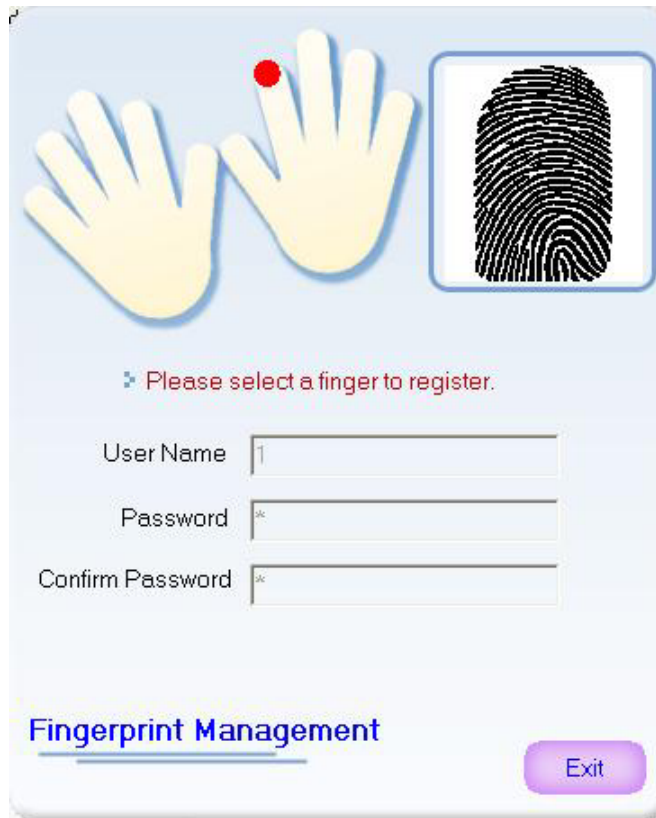


Figure 9. Click on Exit to exit the setup

Reader Secure Login

To access data and information, or change any of the settings on your PC you will need to login to the **Identity Authorization** window. The login window will appear when you plug in the Reader, or anytime you try to access the Opus_R functions.

1. Right click on the **Opus_R**  icon on the Windows System Tray. Select any of the options.

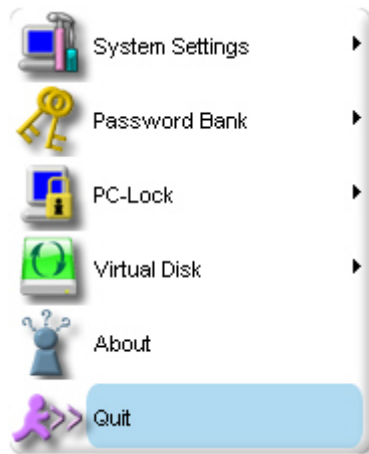


Figure 10. FPOpus Pro Functions

2. The **Identity Authorization** window will appear. Enter your fingerprint, or secret password to access the Opus_R specific function.

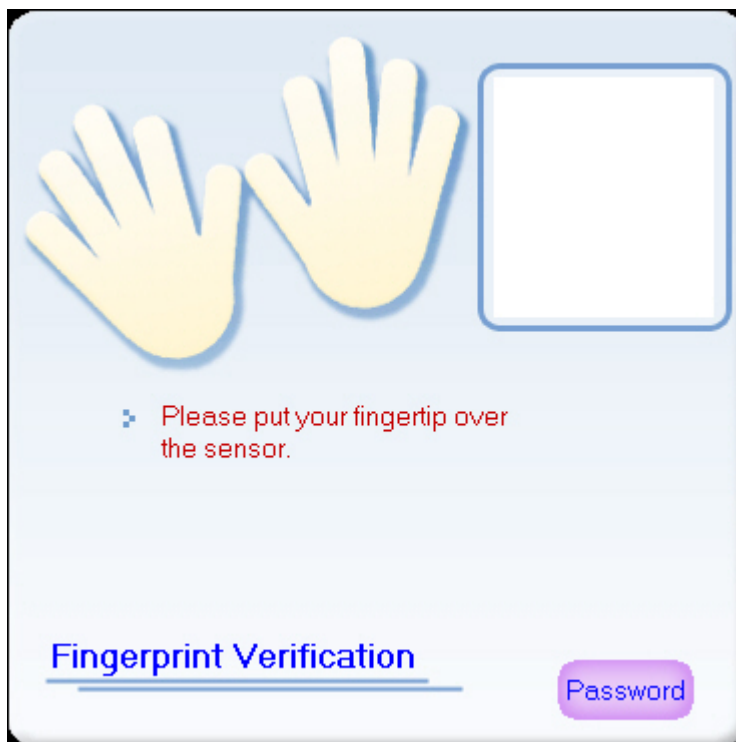


Figure 11. Identity Authorization Login

3. An incorrect, or unrecognized fingerprint scan will result in the “**Verification failed**” message window.

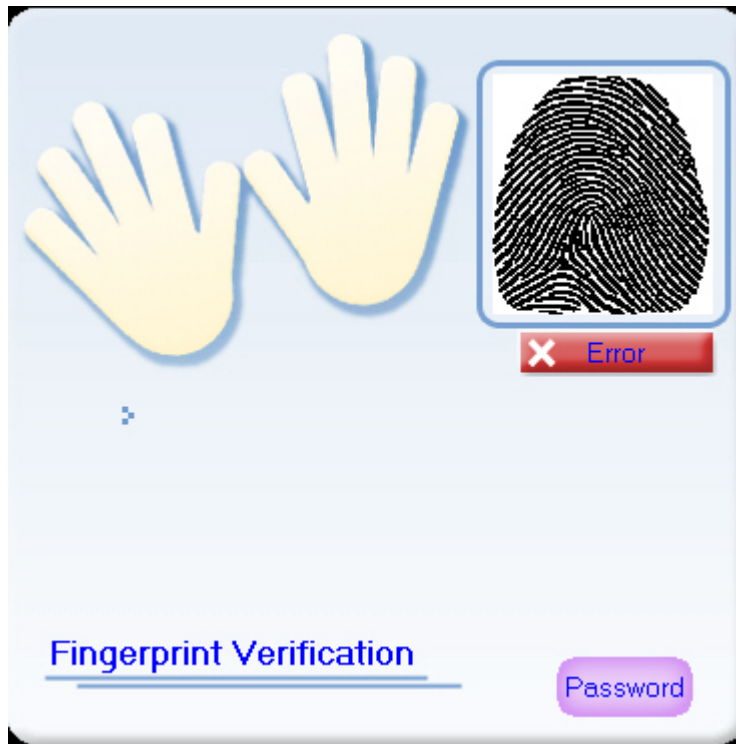


Figure 12. Verification Failed

4. A successful fingerprint login will allow you to begin using the selected Reader's feature.

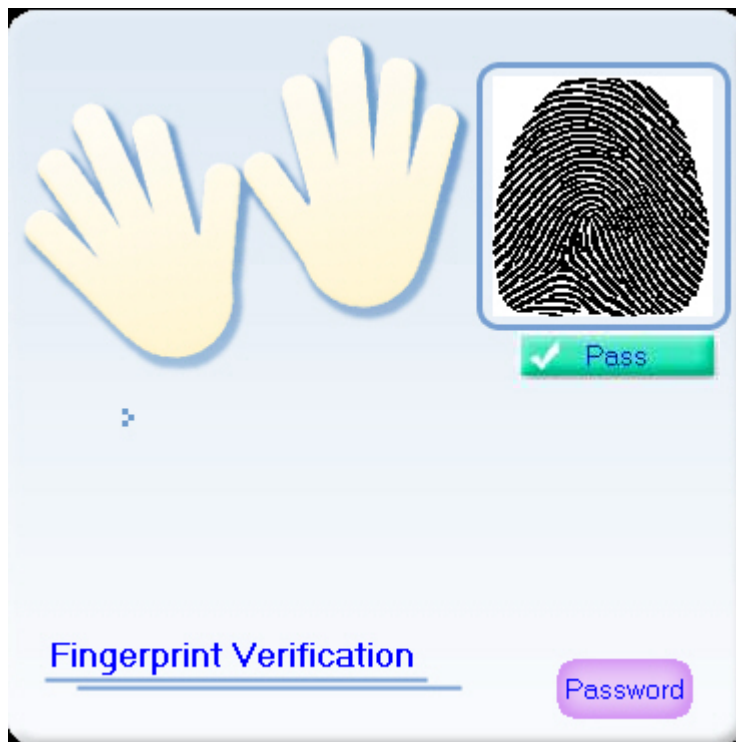


Figure 13. Fingerprint verification successful

5. To login using your password; simply input your password in the Password space.

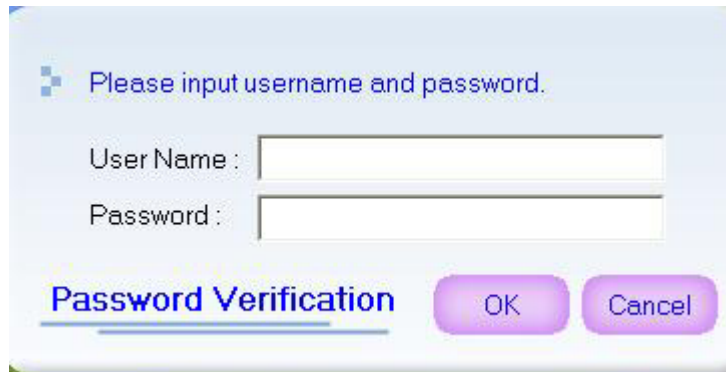


Figure 14. Input Password

6. An incorrect password will result in the “**Invalid Password**” message window.

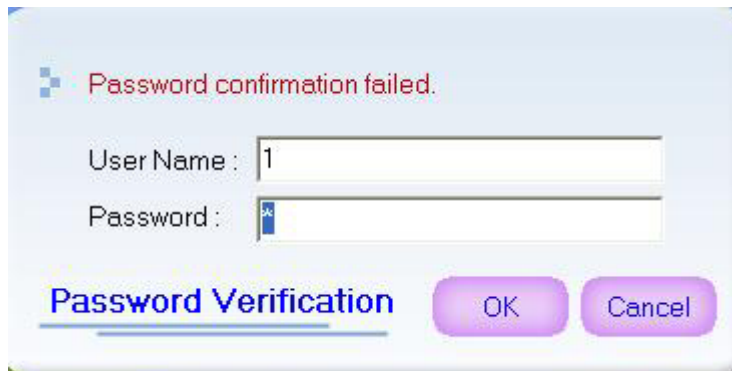



Figure 15. Invalid Password

7. A successful password login will allow you to begin using the selected Opus_R feature.
-

Function - Introduction

Put your mouse pointer on the icon  and press the right key. You will find main menu, including 6 main functions as follow.

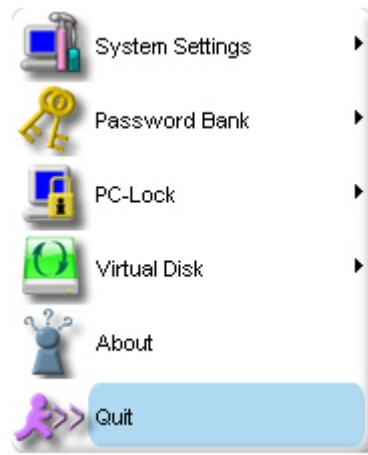


Figure16. **Basic** menu

1. **System Settings** : Including Fingerprint Management、 Preferences、 Stop Authentication Session、 User Profile Backup/Restore/Reset.

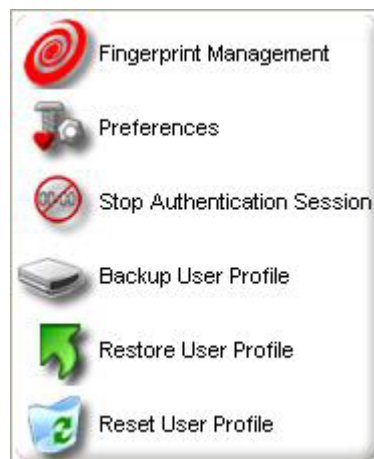


Figure 17. **System Settings** menu

2. **Password bank** : Including Save Website Login、 Delete Website and Quick Login Websites.



Figure 18. **Password Bank** menu

3. **PC-Lock** : Lock PC to prevent the unauthorized user from acquiring or changing the data.



Figure 19. **PC-Lock** menu

4. **Virtual Disk** :



Figure 20. **Virtual Disk** menu

5. **About** : Introduce the reference information about Opus_R.

6. **Quit** : Exit **Opus_R**

System Settings

You can change the Opus_R settings by entering the **System Settings** in the Fingerprint Application Suite. System Settings can only be accessed by logging in to the **Identity Authorization** window using your fingerprint, or secret password.

This section contains information on;

- **Fingerprint Management**
- **Preferences**
- **Stop Authentication Session**
- **Backup User Profile**
- **Restore User Profile**
- **Reset User Profile**

Fingerprint Management

1. Please choice Fingerprint Management under System Settings. You could manage the data of 10 fingers such as Add enrollment, Modify and Delete.



Figure 21. **System Settings** menu

2. Enter Fingerprint Management, please move your mouse pointer on the enrolled finger and press the left key. It will show the options of Edit and Delete. If you press Edit, you could modify its User Name and Password.



Figure 22. Edit / Delete options

3. If you choice Delete, this enrollment will be deleted from Opus_R and this fingerprint couldn't be used for authentication.



Figure 23. Delete the enrollment

Preferences

This section allows users to set the verification Method, Authentication Session time and Language.

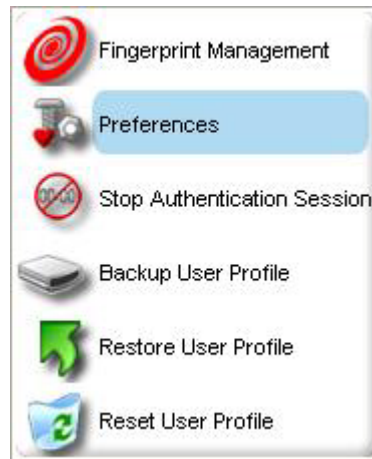


Figure 24. **System Settings** menu

- Authentication Method :
 1. Fingerprint and Password : After using fingerprint to verify, you still need to input the correct password.
 2. Fingerprint or Password : Fingerprint verification first, or select password button then password verification instead.
- Authentication Session Timer :

Users can also set the valid time for verification. During this time, you can use any functions without any further verifications.
- Language :

You could choice the language of Reader's user interface. There are English, Traditional Chinese and Simplified Chinese to choose at present.

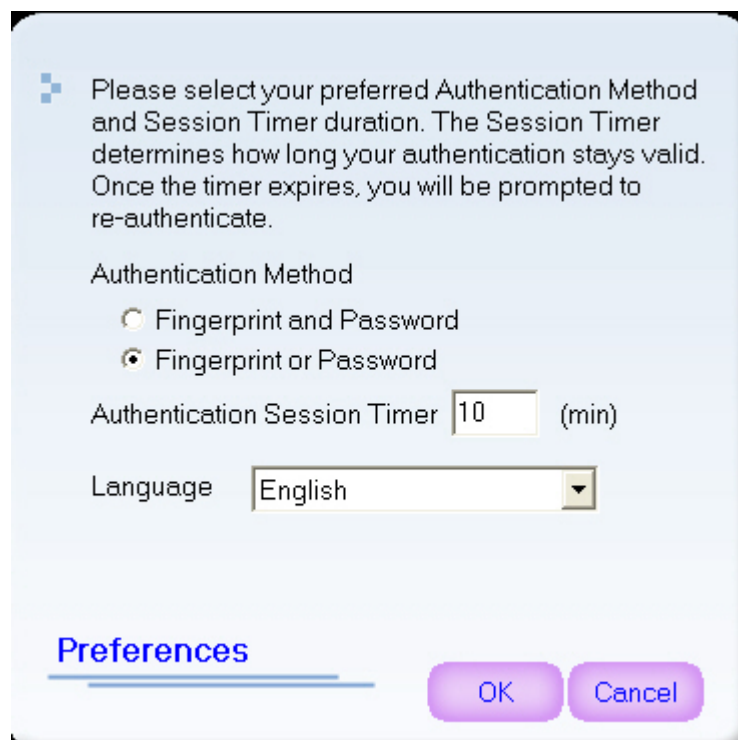


Figure 25. **Preferences** Sections

Stop Authentication Session

It's a setting about verification valid time. When using the Opus_R they all need to verify the user's fingerprint. And if you set the authentication valid time greater than zero, it doesn't verify again when you have verified during this time until the time is expired. However, Stop Authentication Session can force to stop the authentication valid time, and you must to verify again before using all functions.

Backup User Profile

All of the user information stored on the **Opus_R** including, your User Information, Passwords and Fingerprint information can be backed up to the computer you are using in the form of a *.bak file. It is important to create a Backup User Profile.


1. To use the **Backup User Profile**, right click on the **Opus_R**  icon on the Windows System Tray and select "**System Settings.**" In the drop down menu select the "**Backup User Profile**" option.



Figure 26. Fingerprint Application Suite

2. The **Fingerprint Verification** window will appear. Enter your fingerprint, or secret password to access the **Backup User Profile** setting.

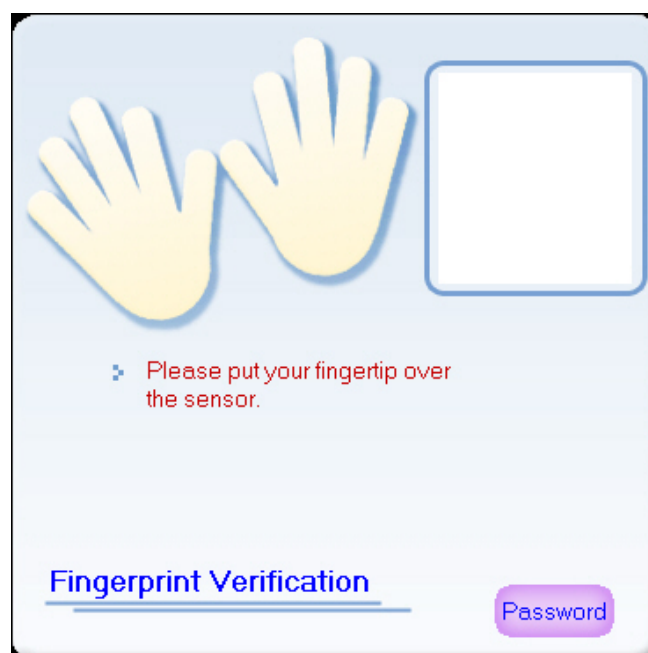


Figure27. Fingerprint Verification window

3. The **Backup User Profile** window will appear with a predefined destination folder for the **Backup**

User Profile, you can change the destination folder by clicking on the drop down button. Click on the “**Save**” button to begin the Backup process, or the “**Cancel**” button to exit the **Backup User Profile** settings.

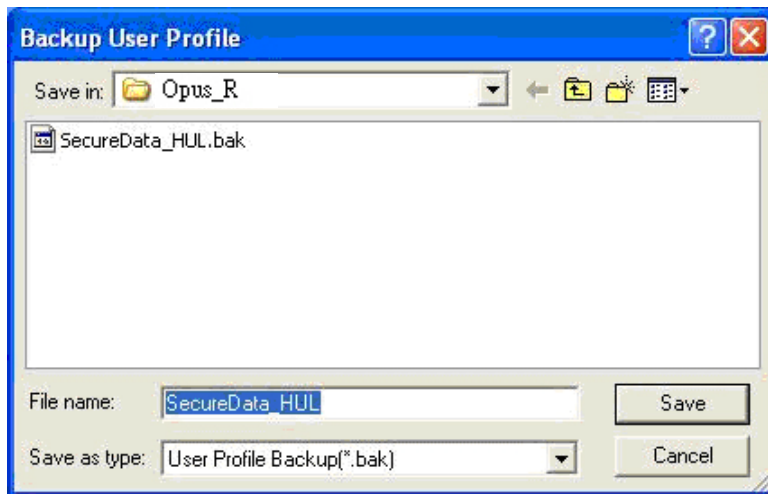


Figure28. Backup User Profile

4. A “**Backup**” has successfully completed message window will appear. Click on the “**OK**” button to complete and exit the **Backup** feature.



Figure29 Backup Successful

Restore User Profile

Restoring the User Profile will restore the **Opus_R** User Information you backed up to the computer in the form of a *.bak file. This includes restoring, User Information, Passwords and Fingerprint information, so any previously protected files on the computer can be opened.


1. The **Restore User Profile** feature can be accessed, by right clicking on the **Opus_R**  icon on the Windows System Tray and select “**System.**” In the drop down menu select the “**Restore User Authentication File**” option.



Figure 30. Fingerprint Application Suite

2. The **Identity Authorization** window will appear. Enter your fingerprint, or secret password to access the **Restore User Profile** setting.

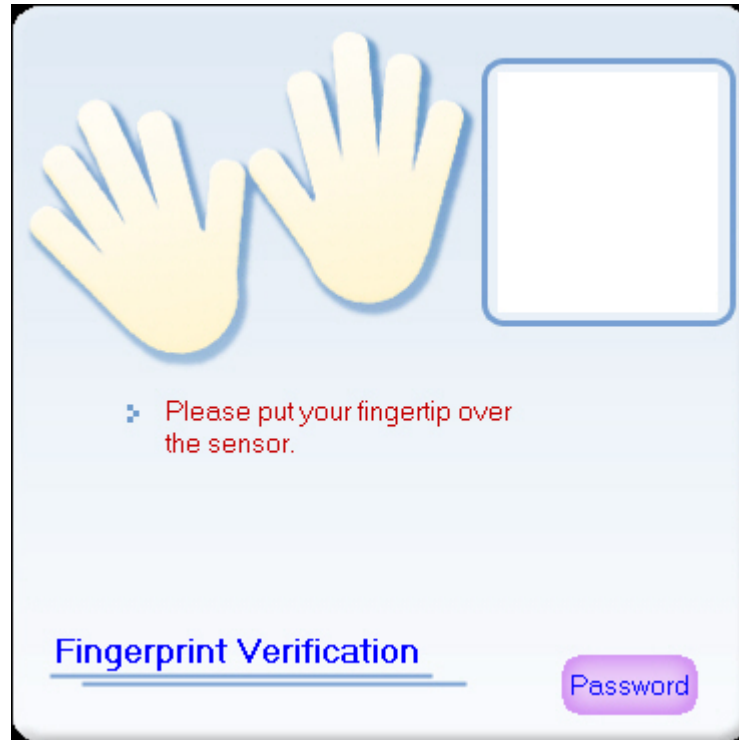


Figure 31. Identity Authorization Login

3. The **Restore** window will appear. If you selected to use the predefined folder location for the **Backup User Profile**, the file will be automatically selected as the Restore file. However, if you specified a different location for the **Backup User Profile** you will have to locate and open the file by clicking on the **“Open”** button.

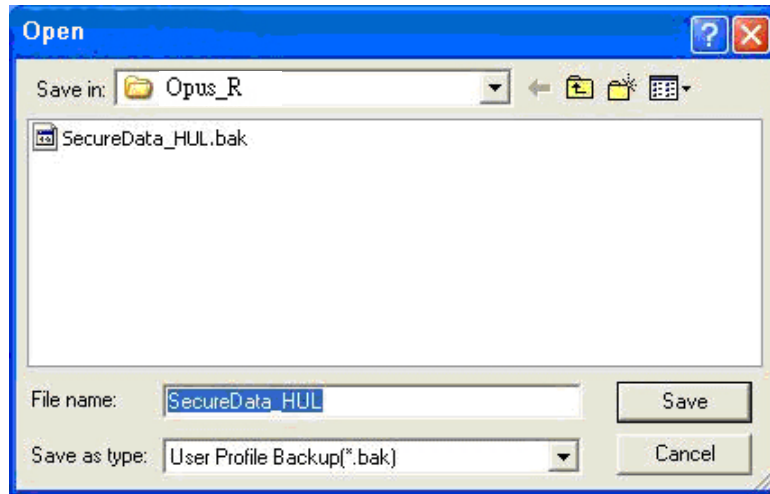


Figure 32. Restore User Profile

4. In the **Restore** window, click on the **“Finish”** button to exit the **Restore User Profile** settings, or click on the **“Restore”** button to run the **Restore** process. A **“Restore”** message window will appear informing you that you must scan your Fingerprint in the **Identity Authorization** Login window (only your Fingerprint will be accepted, there is no facility for entering your Secret Password) to proceed. Click on the **“OK”** button to continue.

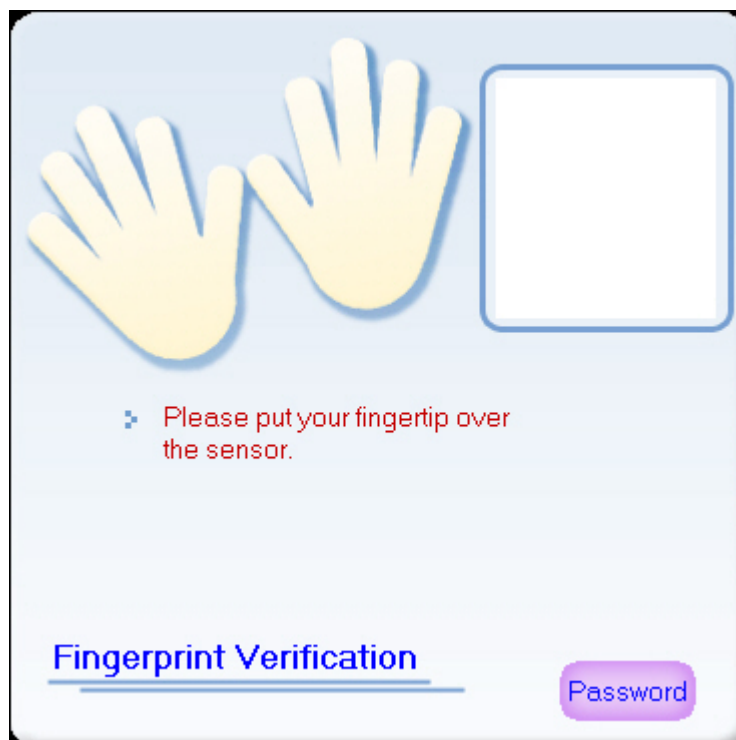


Figure 33. Restore Fingerprint scan

5. After your Fingerprint is authorized the **“Restore successfully”** message window will appear. Click on the **“OK”** button to complete and exit the **Restore** feature.

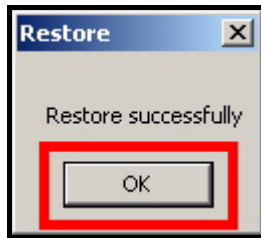


Figure 34. Restore Successful

Password Bank

The **Password Bank** feature allows you to automatically login to any website where you have a registered account. **Opus_R** will keep a secure list of all your usernames and passwords, so when you visit a website where you are a registered user, **Opus_R** will automatically log you in and when you are finished using the computer, simply remove your **Opus_R** and all your passwords are erased from the computer. Password Bank can only be accessed by logging in to the **Identity Authorization** window using your fingerprint, or secret password.

1. To use the **Password Bank** feature, ensure the **Reader** is plugged into the computer you are using. Go to a website where you have a registered account and enter your **Username** and **Password**.

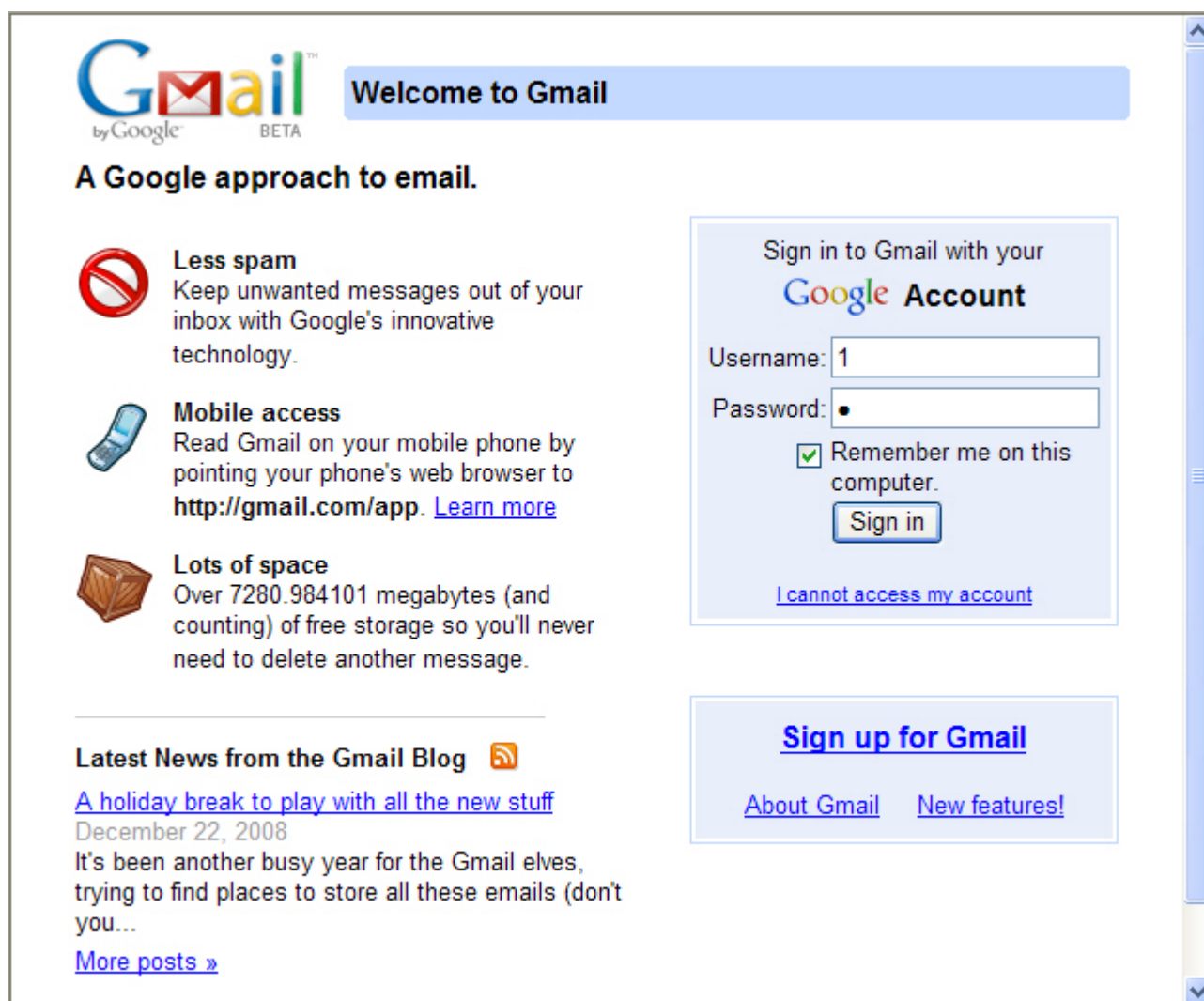


Figure35 Input the account and password

2. Then select Save Website Login in Password Bank, and choose the name of web page.

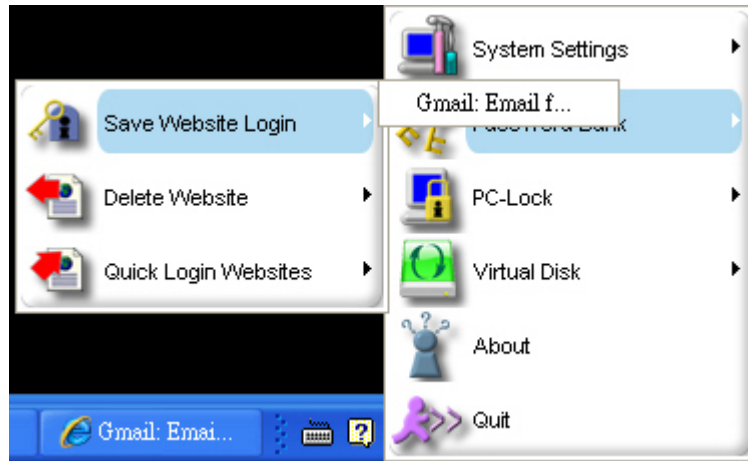


Figure36. Select Save Website Login

3. The **Identity Authorization** window will appear. Enter your fingerprint, or password to access the **Password Bank** function.

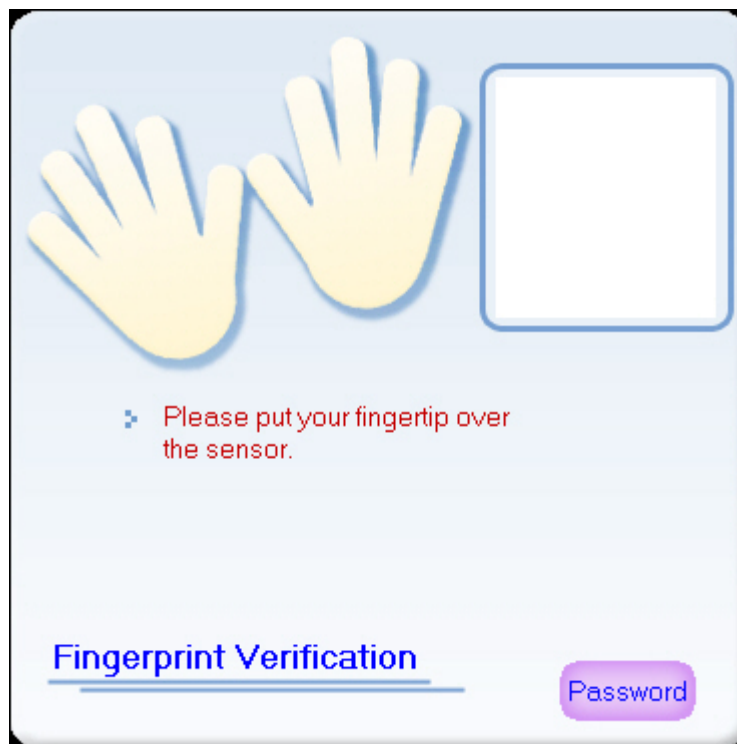


Figure37. Identity Authorization Login

4. Input the quick link name for this web page and if you select Enable AutoLogin, the web site could be quick link and auto login.

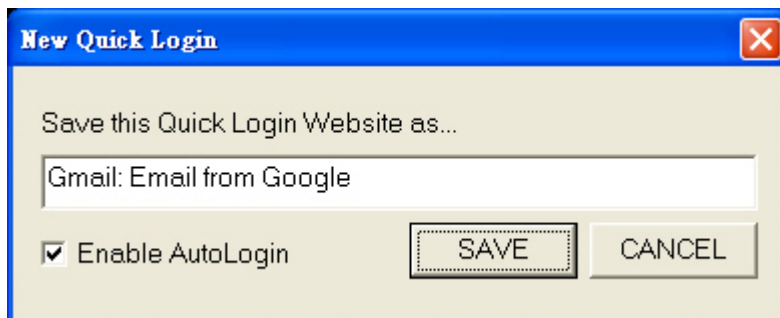


Figure38. Save website registration information to the Reader

5. After the website **Username and Password** have been saved to the **Reader**, the **“Saved successfully”** message window will appear. Click on the **“OK”** button to complete and exit the **Password Bank**.



Figure39. Saved successfully

Delete Website

1. Find Delete Website in Password Ban, and choose the website page that you would like to delete. And the page will be deleted after pressing "Yes" button in re-check frame as below.

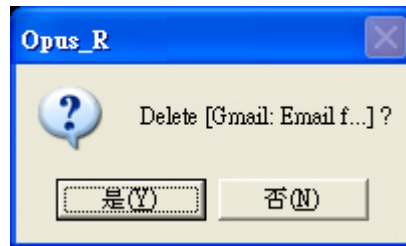


Figure 40. Re-check frame

2. After finishing Delete web page, please press "OK" button to exit.



Figure 41. Delete successfully

Quick Login Websites

You could choose the website page that you would like to login from the Quick Login Websites list in Password Bank. After fingerprint verification is successful, the website page will be opened and your account and password will be sent. If you had select Enable Autologin for the website page you choose, the website page will be login automatically.

Protect Files

The **Opus_R Protect Files** feature allows you to securely protect files that are stored on your computer. Protected files can only be accessed by logging in to the **Identity Authorization** window using your fingerprint, or password.

This section contains information on;

- **Protect Files**
- **Unprotect Files**
- **Search Protected Files**

File / Folder Encryption

1. Right-click the file or folder that you would like to encrypt and it will pop up a context menu. Then please choose the Encryption.

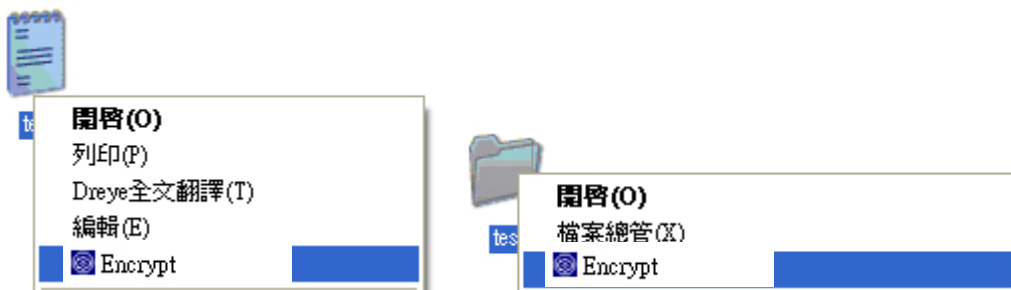


Figure42. Selecting the Protect file option

2. The **Identity Authorization** window will appear. Enter your fingerprint, or secret password to access the **Protect files** function.

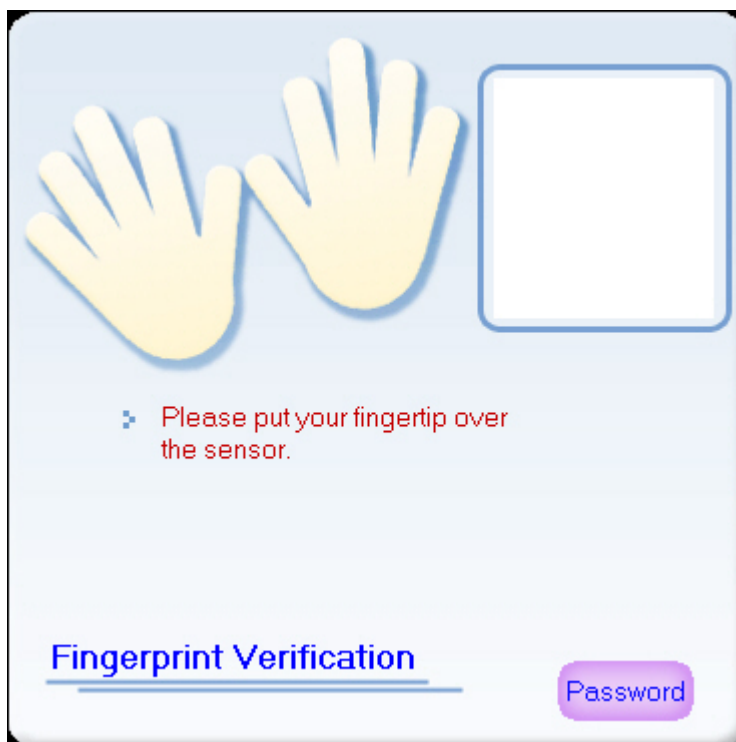


Figure43. Identity Authorization Login

3. The icon of the confidential file or folder will be changed. Unless verifying the correct fingerprint, no

one can open it.



Figure44. Confidential file and folder

File / Folder Decryption

There two methods to decrypt the confidential file or folder. One is to right-click the confidential file or folder, then choose the Decryption item; another is to double click the confidential file or folder directly, then you can open it by fingerprint verification. When applying the second method, the opening file is Read-Only. The confidential file and folder couldn't be removed or copy.

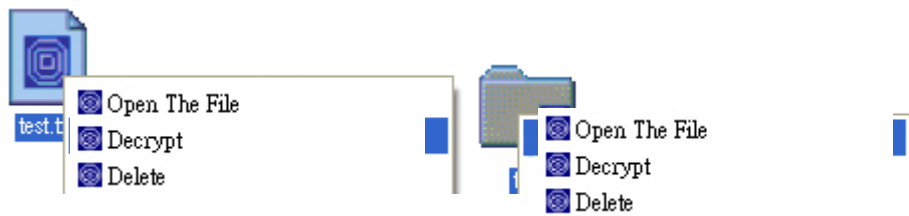


Figure45. File and Folder Decryption

PC-Lock

This function will help you to lock PC to prevent the unauthorized user from acquiring or changing your data. Besides, you can login your Windows through fingerprint verification instead of original Windows password login.

Including :

- **Lock Now**
- **Settings**

Lock Now

1. Select the Lock Now in PC-Lock and your computer will be locked right away. If you would like to open it you have to execute fingerprint verification.

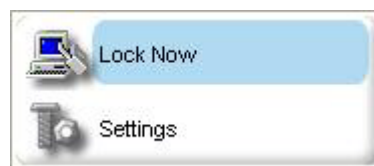


Figure46. **PC-Lock menu**

2. After locking, it will show a locked icon in the middle of the screen. Press any key and it will ask you to do the fingerprint verification. The PC will be unlocked if the fingerprint verification is success.

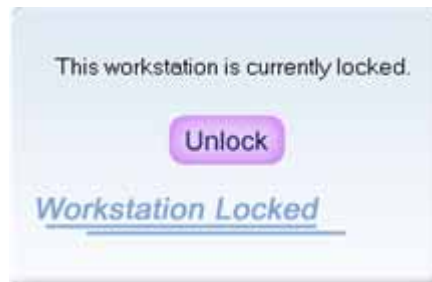


Figure47. **PC locked icon**

Settings

There are three methods for PC Lock and you could have multiple choices.

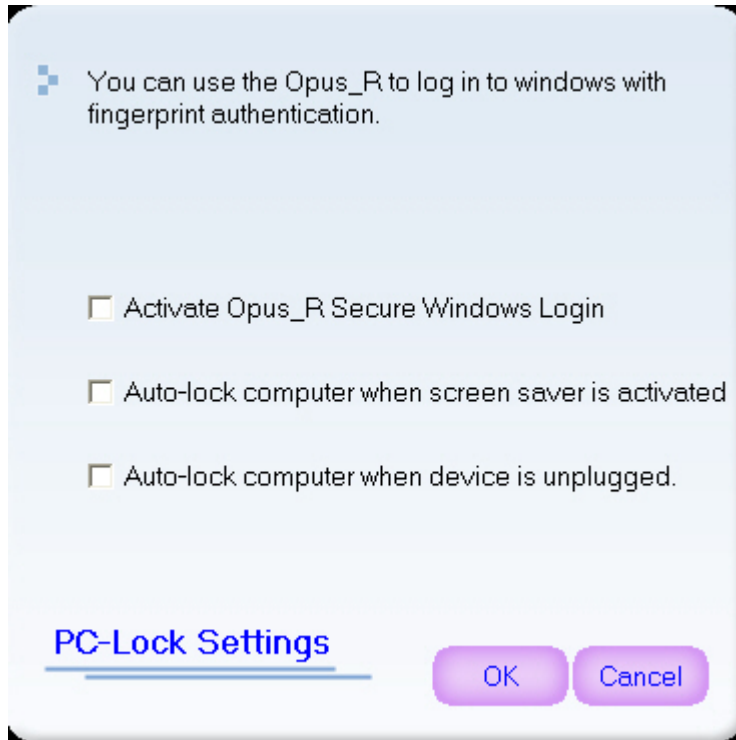


Figure48. PC-Lock Settings frame

I. Activate Opus_R Secure Windows Login :

1. If you select this function, Windows login frame will be changed as below. And you have to press Ctrl+Alt+Del at the same time to enter next step.

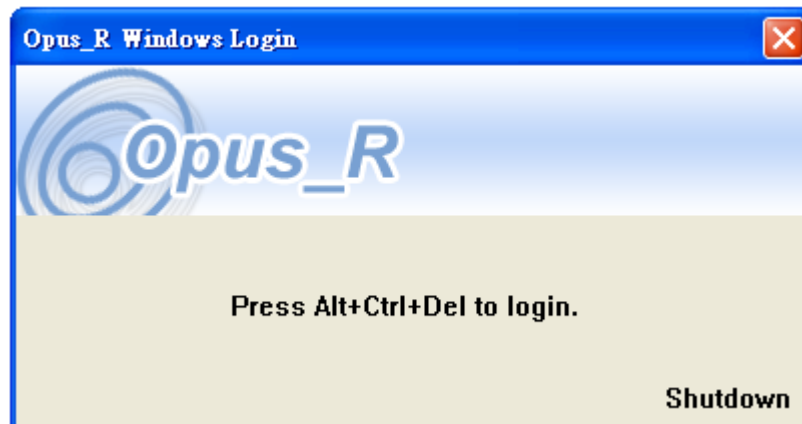


Figure49. Login

4. After pressing Ctrl+Alt+Del, **Opus_R** will ask you to do the fingerprint verification. You will login the Windows if the fingerprint verification is success.

II. Auto-lock computer when screen saver is activated :

PC will be locked automatically when screen saver is activated, unless using fingerprint verification to unlock it.

III. Auto-lock when device is unplugged :

PC will be locked automatically when **Reader** is unplugged.

Virtual Disk

This function will create a virtual disk in your computer. The volume of virtual disk is according to the actual disk volume and your setting. If you would like to create or mount a virtual disk, you have to pass through the fingerprint verification. Certainly, you won't find the virtual disk if you un-mount it or unplug Reader.

Mount Virtual Disk

1. When you create a new virtual disk, you will find a setting frame as below. You could decide the location, name and volume for the virtual disk.
2. After setting and press the "OK" button, it will start to create a new virtual according to your decision and please be patience during the created process.

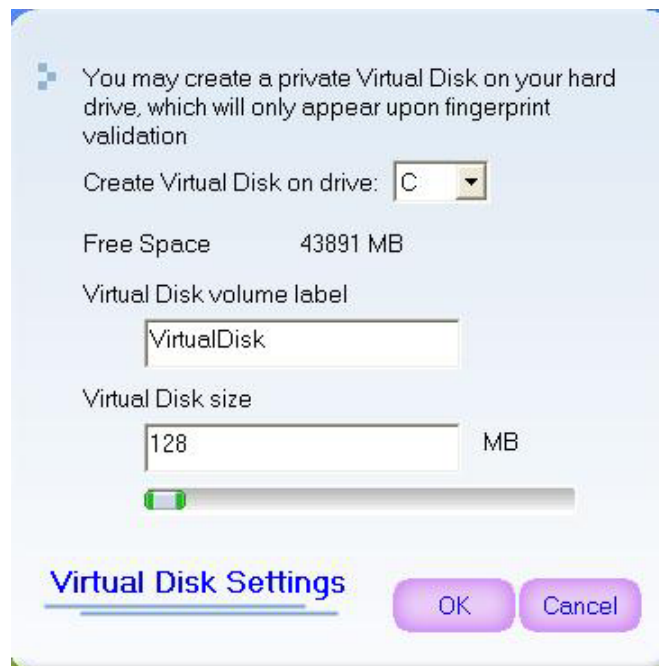


Figure 50 Setting virtual disk

3. Finishing creating, you will find a Z disk named Virtual disk. If Z disk is taken, it will change to take Y、X、W... analogize. If your actual disk is FAT32 style, the biggest volume will be less than 4095MB.



Figure51. FAT32 limited frame

Unmount Virtual Disk

Choose Un-mount Virtual Disk in Virtual Disk, and the virtual disk will disappear in PC. It's unable to find the virtual disk but the data in virtual disk is really in PC

Delete Virtual Disk

This function will delete all virtual disk. Select this function then press the 'Y' button, the virtual disk will be all deleted.

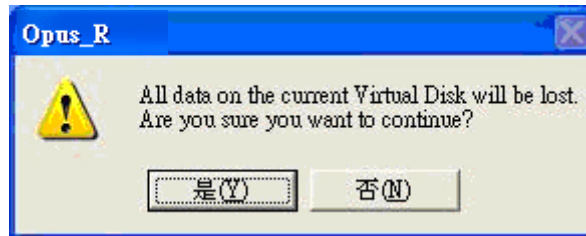


Figure 52. Re-check for delete Virtual Disk

Setting Virtual Disk

Choose settings in Virtual Disk, you can decide where to put the virtual disk, the name of virtual disk and volume as below :

1. Choose the hard disk letter where you would like to put the virtual disk in.
2. Input the name of the virtual disk.
3. Regulate the capacity of the virtual disk (If you set the seize to zero, the virtual disk will be deleted)

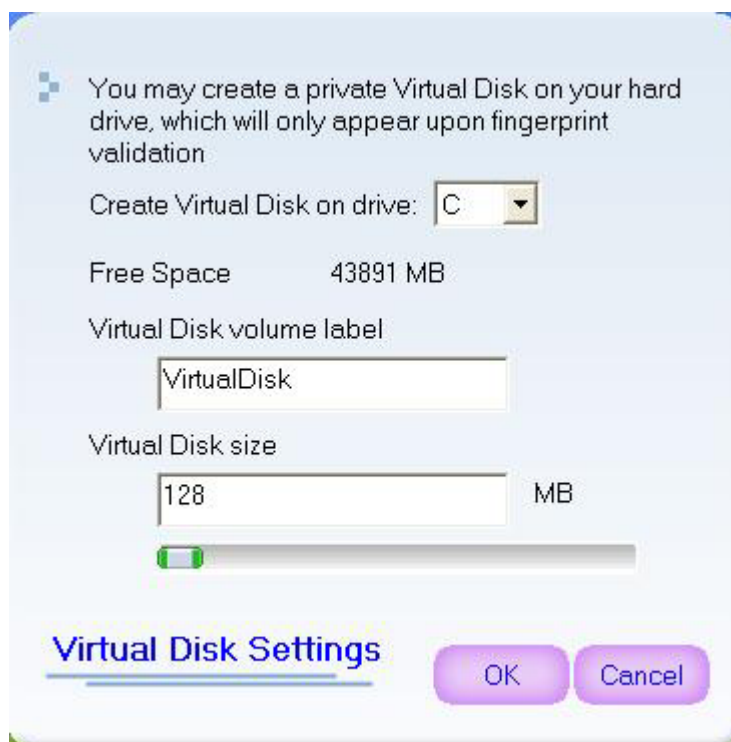


Figure53. Setting Virtual Disk